

# *skyline . newsnote . 5.18*

Mail bag virtually empty this month.....BUT Congratulations to **George and Carol (Vierra) Szymkiewicz**, honored as San Jose's Volunteers of the Year for their work cleaning the River.

**The usual frivolity/gluttony at Fentons.....**

**Diane Breen Helman, Dyhannis and Dick Street** contemplate one of the small offerings.



Below: (back row) **CB Haines, Dyhannis, Diane Breen Helman, George/Carol Szymkiewicz, Robert Falaschi, Bruce Quan, Richard Clarke, Dick Street**;(middle) **Gay Parker, sdc, "Talk to the Hand" Sommer, Cynthia Young Harelson, Tom LaMarre**; (bottom) **Maureen Sarment, Sue Bingham Pate, Kipi Rawlins, Cheryl LaMarre, Judy Belcher.** Photo by Boo Quan



And then it was on to Kasper's for another cholesterol day where **Stan Lore** and **Don Sarver** caught up. Also hanging out were **Richard Clarke, Howard Allen, Cynthia Young Harelson, Gay Paker, Rick Steen and Barbara Uhlig Harbidge.**



No official Kasper's in May.....but do stop by if you need a fix.

\*\*\*\*\*

Good Morning All!

**Coach Seán Kohles and I are in the process of building Skyline's first ever alumni association.**

We have planned a kick off event for alumni on **May 12th from 3 pm to 6 pm at Skyline.**

We would like to showcase student work and performances for a portion of the event.

I realize this is late notice, but we are hopeful that the following student groups would be able to participate in some capacity:

- Dance
- Jazz Band/Orchestra
- Drama/Theater
- ASB Leadership Students
- 2D/3D Art classes
- Black Student Union
- La Raza United
- Poly Club
- Bike Club
- GSA

**If you and your students are able to support the kick off event, please email [justin.anderson@ousd.org](mailto:justin.anderson@ousd.org) and [seankohles@gmail.com](mailto:seankohles@gmail.com) no later than Tuesday, May 8th**

Please click this [Tentative Agenda](#) to view the layout of the kick off event.

Thank all! I will follow up with you individually when I see you. Go Titans! Justin and Seán  
**Alumni Association Kick Off Event**

Date: May 12th

Time: 3:00 - 6:00 PM

Location: 12250 Skyline Blvd, Oakland CA. 94619

Senior Lawn and Theatre

Tentative Agenda:

**Senior Lawn from 3:00 to 4:30**

- 3:00 to 3:30 Refreshments, Mingle
- 3:30 to 3:40 Introduction, Appreciation and Purpose
- 3:40 - 4:00 Ice breaker
  - Find someone in the same decade as you and discuss the following prompts:
    - Find a teacher or staff member that you both knew
    - Talk about one group, club, sport or program you were a part of while in high school.
    - Share a fond memory of your time at Skyline
  - Find someone from a different decade and discuss the following prompts:
    - Try to identify one tradition that existed across both time periods
    - Talk about one group, club, sport or program you were a part of while in high school.
    - Share a fond memory of your time at Skyline
- 4:00 - 4:30 Food and Mingle

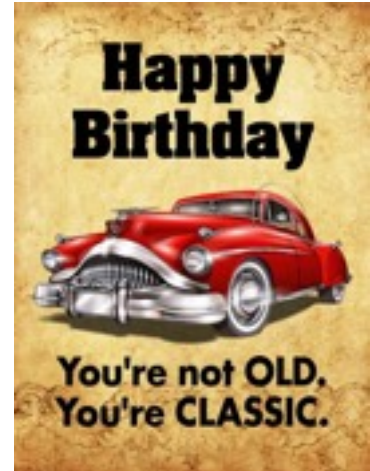
-----  
**Auditorium from 3:30 to 6:00**

- 4:30 to 5:00 Alumni Association Vision and Goals
  - 5:00 - 5:45 **Student Performances and Presentations**
    - We
    - are hoping to get as many performances as we can. If we need less time
    - for this, we will adjust. If we need more time, we can extend it.
  - 5:45 - 6:00 Sign ups and Mingle
- 6:00 + Optional Happy Hour at Monaghans

## Birthdays

### May

05	Andrea Thompson
06	Bruce Goddard
07	John Close
08	Jim Barranti
12	Laynee Melmet Goodstein
19	Ken Hood
25	Marti Heath



## Texting Codes For Seniors

HOG - Hot Old Guy  
ABFF - At Best Friends Funeral  
BMW - Bring My Walker  
ATD - At the Doctor's  
DBI - Disaster Because Incontinent  
FWIWG - Forgot Where I Was Going  
GGBCI - Gotta Go, Bladder Control Issues  
HGBM - Had Great Bowel Movement  
TOT - Texting on Toilet  
LMD - Lost My Dentures  
SMM - Slipped My Mind  
ODGS - Oh Dear! Gas. Sorry!

### June

1	Elaine Hendrikson
13	Kathleen Lofing Crawford
15	Sandy Tyler
19	Bob Nordgren
22	Bill Giacometti
26	Craig LaBarbera Russ Union Jennifer Morag Keene
29	Sue Gracie Lanphear

Every day I understand the phrase "I'm getting too old for this shit" on an even deeper level.

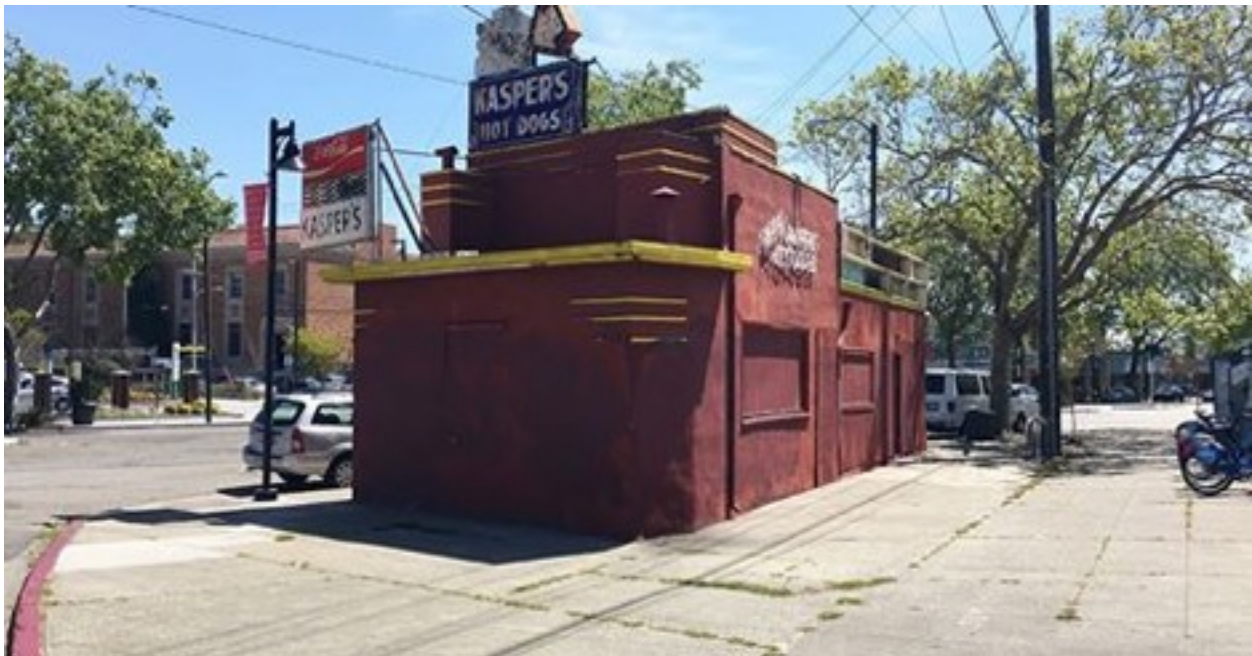
One day you're 23, staying up until 3am, eating pizza, and dancing like no one is watching.

Then suddenly you're 45, eating kale, going to bed at 8pm, and you can't dance because you pulled a muscle putting on your socks.





After fifteen years of disuse, a familiar parcel may find new life as a community hub.



### [Temescal Considering Redesigns For Kasper's Plaza | Hoodline](#)

The Temescal Telegraph Improvement District wants to convert the flatiron plaza to a pedestrian-friendly space.

<https://www.kqed.org/news/11661407/a-time-traveling-map-for-rapidly-changing-oakland>

**Oakland Tours** <http://www2.oaklandnet.com/government/o/CityAdministration/d/economic-workforce-development/o/cultural-affairs/DOWD000366>

**Californians go back to wasting as much water as before the drought**

**By Emily Guerin, KPCC, 4/2/18**

Since Gov. Jerry Brown called off California's drought emergency a year ago, we Californians seem to have gotten a little lazy when it comes to water conservation.

\*\*\*\*\*

**City Accepting Proposals For Historic Montclair Firehouse** Photo: [Our Oakland](#) 6226 Moraga Avenue, Oakland, CA

The city of Oakland is accepting proposals for the development of two adjacent Montclair properties, both located at 6226 Moraga Ave.



The [Notice of Development Opportunity](#) describes Parcel A as 23,884 square feet and “generally unimproved and upsloping.” While the smaller Parcel B is 15,652 square feet and includes the Montclair Firehouse, an historic landmark built in 1927.

Designed by Eldred E. Edwards of the Oakland Public Works Department after a devastating wildfire swept the East Bay hills in 1923, the firehouse lies nearly on top of the Hayward fault, which runs under Moraga Avenue.

Though the structure went through a series of seismic upgrades in 1963, it was vacated after the Loma Prieta earthquake in 1989. Since then, fire services have been transferred to nearby Station 24 and the site has been used as a storage facility for various city departments.

The firehouse was declared a state landmark in 1980, and as such is subject to the [California Historical Building Code](#). Seismic codes have been updated since 1963, which means the building must be retrofitted before development.

The site's landmark status doesn't limit future use as long as proposals preserve historic character, defined as retaining the “integrity of design, material, workmanship, location, setting, feeling, and association,” wrote Harry Hamilton, marketing coordinator for the city's Economic and Workforce Development Department.

“Part of the assessment of proposals will include community and public objectives to make sure the use is appropriate for the surrounding community,” wrote Hamilton, “that the



developer has a willingness to work with neighborhood stakeholders on the project concept and that the project adds to the vitality of Montclair.”

As of this writing, the city has received more 30 general inquiries, but no proposals.

The city will consider all proposals with a minimum offer of \$1.25 million for both properties, but the parcels may also be purchased separately, at a minimum of \$750,000 for Parcel A, and \$500,000 for Parcel B. Before a deal goes through, it must first be approved by the City Council.

Written proposals for development must be submitted by 5pm, Friday May 18th. Open houses will be held on Sunday, April 22nd from 2–4pm, and on Monday, May 7th, from 10am to 2pm.

To download a proposal form, [visit the city's real estate asset management site](#). For general inquiries, contact [Jinnhua Su](#), Real Estate Agent with the City of Oakland Real Estate Services Division.

## **Fruitvale's 'Canticle Farm' Raises Food, Spirits**    Photos: Canticle Farm/[Facebook](#) **by Cirrus Wood**

[@CirrusW](#)

Neighborhoods

[Oakland](#)

Location

1972 36th Avenue, Oakland, CA

[Canticle Farm](#) is just off Foothill Boulevard in Fruitvale, but founder Anne Symens-Bucher says the community is located “at the intersection of faith-based, social justice-based, and Earth-based nonviolent activism.”



The urban farm promotes food sovereignty and security for 26 members spread over six houses, in addition to offering workshops and retreats for educators and the public.

“Growing food is a way to bring community and connection in a neighborhood where people have fences and dogs to protect them,” said Symens-Bucher via email. “Our vision is that our real security comes from relationships.”

A fourth-generation Fruitvale resident, Symens-Bucher conceived of Canticle in 1982, though its current form as an intergenerational, intercultural, interfaith community did not begin until 2010, she said.

The urban farm hosts community dinners every Tuesday at 6:30pm, along with a Sunday morning liturgy at 9am, followed by an open garden party. Following the tradition of ‘loaves and fishes’, attendees need not bring anything besides themselves, but are encouraged to [RSVP via email](#).

Canticle also hosts Spanish language natural-medicine making workshops, meals for neighborhood women and children, and hosts an ongoing support group for single mothers of color. In June, the farm will host a queer emerging artists residency, and later in the summer, it will host the [California Allegory Youth Fellowship](#), a program for young climate change activists.

The farm takes its name from the [Canticle of Creation](#), a song of praise penned by Saint Francis of Assisi, the patron saint of animals and ecology.

Though based in no singular religion, as an interfaith organization, the farm asks that residents and volunteers be grounded in a spiritual practice. The farm welcomes volunteers who are interested in farm work, nutrition, medicine, and other means of community building.

“At the end of his life when everything was unraveling, he chose to sing a song of gratitude, praise and interconnectedness with all of the natural world,” said Symens-Bucher. “As ecosystems, political systems, social and other systems are unraveling in our own time, we choose to put our attention on gratitude and sing a song of interconnectedness and thanks.”

“There is only one Canticle Farm,” wrote Symens-Bucher, “but we hope that other people can be inspired to take down fences, grow food together and live in community across differences.”

To date, Canticle alumni have founded three projects: volunteer food redistribution service [Fruta Gift](#), edible landscaping company [Growing Together](#), and [Amor Art Farm Oasis](#), which offers free weekly vegan meals.

Canticle Farm is located at 1972 36th Ave. and is currently seeking volunteers with carpentry experience. General inquiries can be sent to [canticlefarmers@gmail.com](mailto:canticlefarmers@gmail.com).

\*\*\*\*\*

**Treasure Island Is Sinking as Seas Are Rising, and So Are Other Bay Area Cities**<<https://www.kqed.org/science/1920819/treasure-island-is-sinking-as-seas-are-rising-and-so-are-other-bay-area-cities>>  
By Molly Peterson, KQED Science, 3/7/18

If you imagine the San Francisco Bay as a bathtub, sea level rise means the bathwater is rising. A new study published today in Science Advances finds the tub is sinking too, and in some places, more than others.

\*\*\*\*\*

**Today's selection -- from *The Accidental Universe* by Alan Lightman.**

The universe is almost inestimably large:

"[With every increase in our ability to understand and measure it], the cosmos has gotten larger and larger. At each new level of distance and scale, we have had to contend with a different conception of the world that we live in.

"The prize for exploring the greatest distance in space goes to a man named Garth Illingworth, who works in a ten-by-fifteen-foot office at the University of California at Santa Cruz. Professor Illingworth studies galaxies so distant that their light has traveled through space for more than thirteen billion years to get from there to here. You can hardly turn around in his office. It is cramped with several tables and chairs, bookshelves, computers, scattered papers, copies



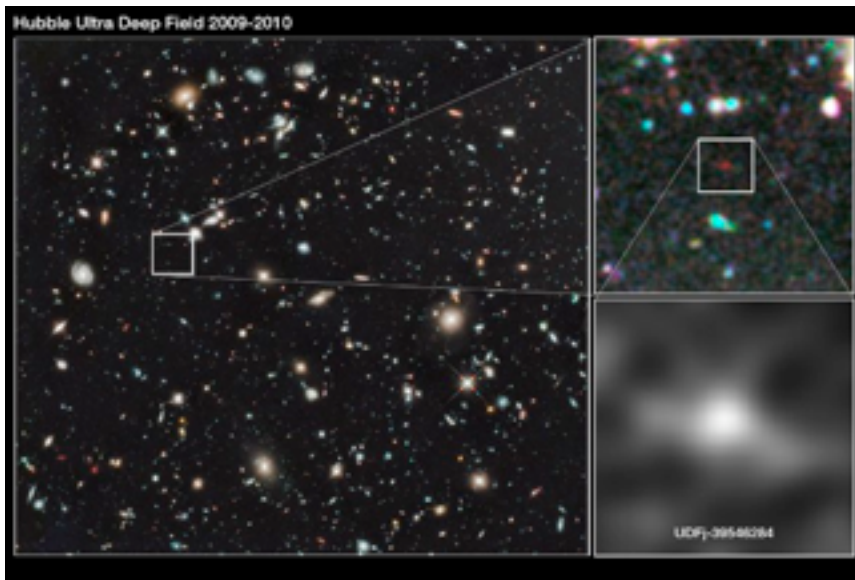
of *Nature* magazine, and a small refrigerator and microwave to fortify himself for research that can extend into the wee hours of the morning.

"Like most professional astronomers these days, Illingworth does not look directly through a telescope. He gets his images by remote control -- in his case, quite remote. The telescope he uses is the Hubble Space Telescope, which orbits the Earth once every ninety-seven minutes, high above the distorting effects of the Earth's atmosphere. Hubble takes digital photographs of galaxies and radios these images to other orbiting satellites, which relay them to a network of earthbound antennae; these, in turn, send their signals to the Goddard Space Flight Center in Greenbelt, Maryland. From there the data are uploaded to a special website that Illingworth can access from a computer in his office.

### UDFj-39546284 appears as a faint red blob

"The most distant galaxy Illingworth has seen so far goes by the name of UDFj-39546284, documented in early 2011. This galaxy is about 100,000,000,000,000,000,000 miles away from Earth, give or take. It appears as a faint red blob against the speckled night of the distant universe -- red because the light has been stretched to longer and longer wavelengths as it makes its lonely journey through space for billions of years. The actual color of the galaxy is blue, the color of young, hot stars, and it is twenty times smaller than our galaxy, the Milky

Way. UDFj-39546284 was one of the first galaxies to form in the universe.



" 'That little red dot is hellishly far away,' Professor Illingworth told me recently. At the age of sixty-five, Illingworth is a friendly bear of a man, with a ruddy complexion, a thick mane of strawberry-blond hair, wire-rimmed glasses, and a broad smile. 'I sometimes think to myself: What would it be like to be out there, looking around?' "